



TRANSITIONAL™

SLEEP SYSTEM
By Hickory Springs Manufacturing

TS 150 Quick Setup Wireless Remote Kit



TRANSITIONAL™

SLEEP SYSTEM
By Hickory Springs Manufacturing

235 2nd Avenue NW | Hickory, NC 28601 | 844.433.2435 | www.transitionalsleep.com

For questions regarding set-up and installation
please refer to the complete installation manual online at:
www.transitionalsleep.com or call 844.433.2435

Transitional Adjustable Base Quick Guide

(For detailed instructions refer to the online owners manual at www.transitionalsleep.com)

TS 150 Wireless Kit Installation

Your adjustable bed kit contains the following parts:

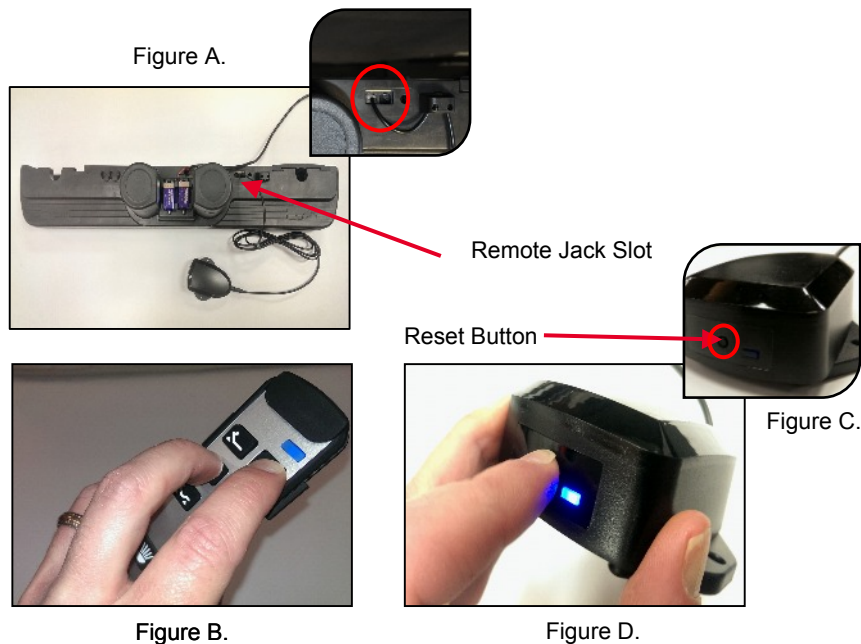
- a. Wireless Receiver w/cable
- b. Wireless Hand Control

Tools Required for Assembly: None

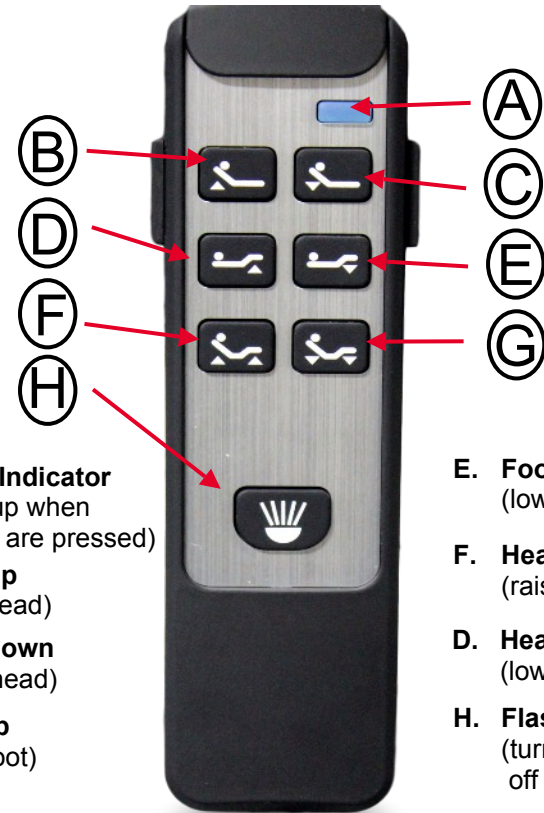


To Install Wireless Kit:

1. Connect Wireless Receiver cable into the remote jack slot on the motor (Figure A.)
2. Sync the Wireless Hand Control to the Wireless Receiver by:
 - a. While pressing the **HEAD DOWN** and **FOOT UP** buttons at the same time, (Figure B.) press the **RESET** button (Figure C.) on the Wireless Receiver (Figure D.)



Hand Control Functions



- A. Power Indicator**
(lights up when buttons are pressed)
- B. Head Up**
(raise head)
- C. Head Down**
(lower head)
- D. Foot Up**
(raise foot)

- E. Foot Down**
(lower foot)
- F. Head & Foot Up**
(raise head & foot)
- D. Head & Foot Down**
(lower head & foot)
- H. Flashlight**
(turns flashlight off and on)